

High-Performance Specialty Products

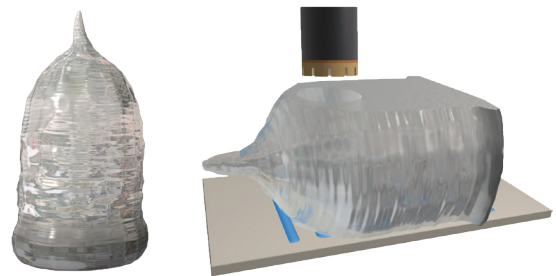
Epoxy Adhesives - Polymer Mounting Beams - Formulated Detergents

VALTRON adhesives, mounting fixtures and detergents improve manufacturing yields for processing sapphire ingots into wafers for small LEDs.

Boule Coring

VALTRON AD1339-A / AD3939-B Epoxy Mounting Adhesive

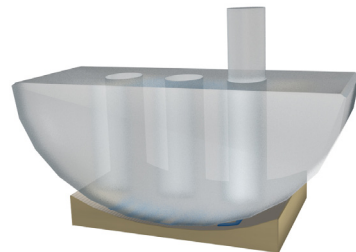
Two-component temporary adhesive securely bonds sapphire crystal boules to polymer mounting beams for the coring process. Rapid bond strength and cure time.



Coring & Wafering

VALTRON AD6020-A / AD3830-B Quick Cure Adhesive

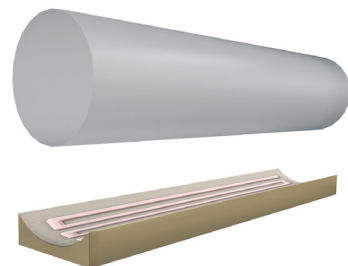
Quick cure adhesive system that offers a cure time of 3-7 minutes at room temperature, providing excellent bonding to mounting surface for sapphire crystal coring and wafering.



Ingot Rough Cropping

VALTRON AD4010-A / AD4015-B Heat Release Epoxy System

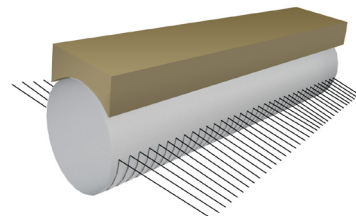
Two-component heat release adhesive securely bonds cored sapphire crystal rods to polymer mounting beams for rough end cropping. Easily debonds from crystalline rods with hot water or VALTRON detergent solution.



Wire Saw Wafering

VALTRON AD1238-A / AD3846-BR Epoxy Mounting Adhesive

Adhesive system that securely bonds sapphire crystal rods to polymer mounting beams for wire saw wafer slicing. Provides fast bond strength and is easily removed from sliced wafers with VALTRON DP164 detergent solution.



Wafer cleaning solutions on back page.

**Wafer
Process
& Final
Cleaning**
(ultrasonic/
spray wash)

**Post
Polish
Cleaning**
(ultrasonic)

**Wax
Removal**
(ultrasonic)

VALTRON SP2260
Pre-Lapping Wafer Cleaning Detergent

This high-purity alkaline detergent effectively cleans LED wafers prior to the lapping process. Removes slurry, kerf and particulates, excellent cleaning and rinsability.

VALTRON SP2560
High Temperature Wafer Cleaning Detergent

High-purity, high-strength alkaline detergent can be used as an alternative to highly caustic KOH solutions. Effective for use in high temperature cleaning systems for removing slurry, particulates and residual adhesives.

VALTRON SW4150
Spray Wash Detergent

High-purity, low-foam alkaline detergent used in spray wash applications for final cleaning of LED wafers. Processed through 0.2 micron filtration, provides excellent cleaning and rinsability.

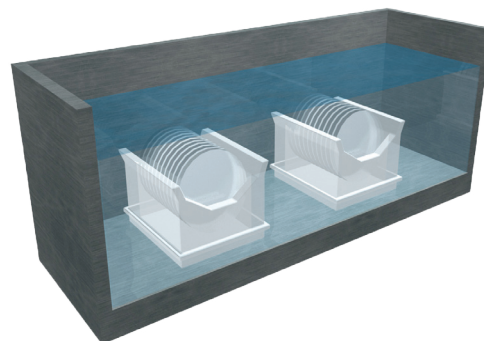
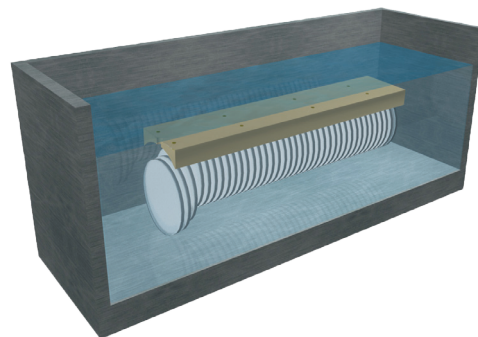
VALTRON DP188
Wafer Polishing Slurry Removal Detergent

High-purity, low surface tension alkaline detergent quickly and effectively removes slurries and other contaminants. Leaves no residue after rinsing.

VALTRON SP2260
Pre-Lapping Wafer Cleaning Detergent

High-purity alkaline detergent effectively cleans LED wafers prior to the lapping process. Removes wax, slurry, particulates and residual adhesives. Excellent cleaning and rinsability.

Contact your local Valtech sales representative for specific products and application requirements.



2113 Sanatoga Station Road, Pottstown, PA 19464 USA
P: 610-705-5900 • F: 610-705-0300
For technical service call or e-mail: technicalservices@valtechcorp.com
www.valtechcorp.com

CERTIFIED
ISO 9001 : 2008
REACH EC 1907/2007

VALTRON®
is a registered trademark of
Valtech Corporation

Information herein is accurate to the best of our knowledge. Suggestions are made without warranty or guarantee of results. Before using, user should determine the suitability of the product for its intended use and user assumes the risk and liability in connection therewith. We do not suggest violation of any existing patents or give permission to practice any patented invention without a license.

